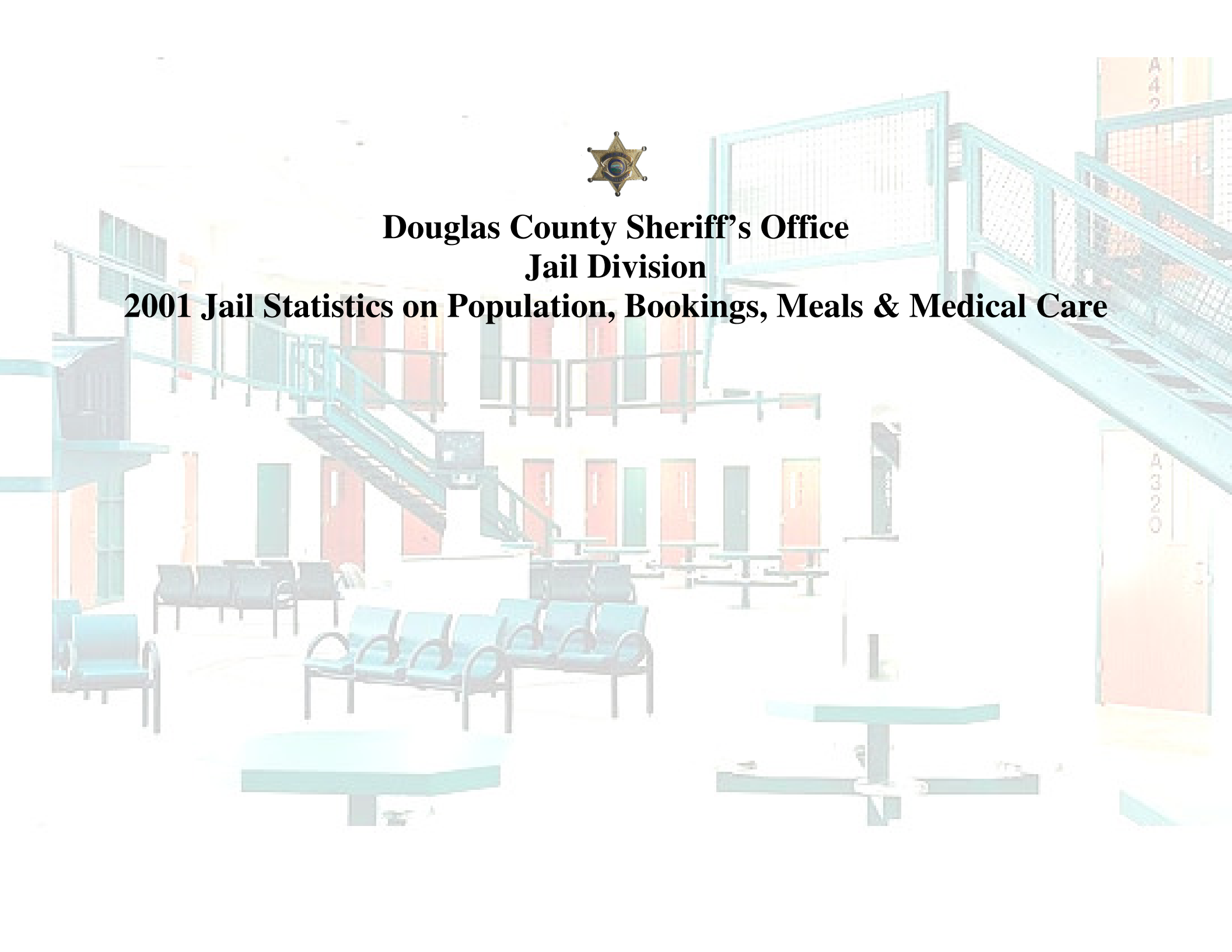




**Douglas County Sheriff's Office  
Jail Division**

**2001 Jail Statistics on Population, Bookings, Meals & Medical Care**



**January 2001**

Total # of Bookings – 425 Inmates (333 male, 92 female)  
 Average Daily Population- 108 inmates  
 Average Population of males- 95 inmates  
 Average Population of females- 12 inmates  
 Ethnicity breakdown based on Average Daily Population-  
 Caucasian- 62%  
 Black- 24%  
 Hispanic- 3%  
 Native American- 9%  
 Asian- 2%  
 Other- Less than 1%

**February 2001**

Total # of Bookings – 409 Inmates (322 male, 87 female)  
 Average Daily Population- 112 inmates  
 Average Population of males- 100 inmates  
 Average Population of females- 11 inmates  
 Ethnicity breakdown based on Average Daily Population-  
 Caucasian-61 %  
 Black- 24%  
 Hispanic- 5%  
 Native American-8%  
 Asian-2%  
 Other- 0%

**March 2001**

Total # of Bookings – 455 Inmates (358 male, 97 female)  
 Average Daily Population- 119 inmates  
 Average Population of males- 105 inmates  
 Average Population of females- 13 inmates  
 Ethnicity breakdown based on Average Daily Population-  
 Caucasian- 67%  
 Black- 19%  
 Hispanic- 5%  
 Native American- 6%  
 Asian- 3%  
 Other- 0%

**April 2001**

Total # of Bookings – 455 Inmates (362 male, 93 female)  
 Average Daily Population- 119 inmates  
 Average Population of males- 104 inmates  
 Average Population of females- 13 inmates  
 Ethnicity breakdown based on Average Daily Population-  
 Caucasian- 63%  
 Black- 25%  
 Hispanic- 5%  
 Native American- 5%  
 Asian- 2%  
 Other- None

**May 2001**

Total # of Bookings – 451 Inmates (361 male, 90 female)  
 Average Daily Population- 114 inmates  
 Average Population of males- 96 inmates  
 Average Population of females- 18 inmates  
 Ethnicity breakdown based on Average Daily Population-  
 Caucasian- 62%  
 Black- 28%  
 Hispanic- 4%  
 Native American- 6%  
 Asian- 0%  
 Other- 0%

**June 2001**

Total # of Bookings – 393 Inmates (322 male, 71 female)  
 Average Daily Population- 99 inmates  
 Average Population of males- 84 inmates  
 Average Population of females- 14 inmates  
 Ethnicity breakdown based on Average Daily Population-  
 Caucasian- 60%  
 Black- 30%  
 Hispanic- 2%  
 Native American- 7%  
 Asian- 0%  
 Other- 1%

**July 2001**

Total # of Bookings – 411 Inmates (335 male, 76 female)  
 Average Daily Population- 98 inmates  
 Average Population of males- 83 inmates  
 Average Population of females- 14 inmates  
 Ethnicity breakdown based on Average Daily Population-  
 Caucasian- 61%  
 Black- 32%  
 Hispanic- 2%  
 Native American- 4%  
 Asian- 1%  
 Other- None

**August 2001**

Total # of Bookings – 488 Inmates (397 male, 91 female)  
 Average Daily Population- 113 inmates  
 Average Population of males- 97 inmates  
 Average Population of females- 15 inmates  
 Ethnicity breakdown based on Average Daily Population-  
 Caucasian- 62%  
 Black- 29%  
 Hispanic- 2%  
 Native American- 6%  
 Asian- 1%  
 Other- less than 1%

**September 2001**

Total # of Bookings – 415 Inmates (329 male, 86 female)  
 Average Daily Population- 119 inmates  
 Average Population of males- 100 inmates  
 Average Population of females- 18 inmates  
 Ethnicity breakdown based on Average Daily Population-  
 Caucasian- 61%  
 Black- 29%  
 Hispanic- 2%  
 Native American- 6%  
 Asian- 2%  
 Other- 0%

**October 2001**

Total # of Bookings – 437 Inmates (337 male, 100 female)  
 Average Daily Population- 113 inmates  
 Average Population of males- 97 inmates  
 Average Population of females- 15 inmates  
 Ethnicity breakdown based on Average Daily Population-  
 Caucasian- 60%  
 Black- 29%  
 Hispanic- 2%  
 Native American- 8%  
 Asian-Other- 0%

**November 2001**

Total # of Bookings – 476 Inmates (379 male, 97 female)  
 Average Daily Population- 117 inmates  
 Average Population of males- 100 inmates  
 Average Population of females- 16 inmates  
 Ethnicity breakdown based on Average Daily Population-  
 Caucasian- 62%  
 Black- 25%  
 Hispanic- 2%  
 Native American- 10%  
 Asian- 1%  
 Other- None

**December 2001**

Total # of Bookings – 446 Inmates (364 male, 82 female)  
 Average Daily Population- 108 inmates  
 Average Population of males- 94 inmates  
 Average Population of females- 12 inmates  
 Ethnicity breakdown based on Average Daily Population-  
 Caucasian- 64%  
 Black- 24%  
 Hispanic- 2%  
 Native American- 9%  
 Asian- .5%  
 Other- .5%

2001 Average Daily Population using the average numbers listed previously comes out to be 112. Break that down further 97 were male and 15 were female.

Total bookings for the year were 5,261.

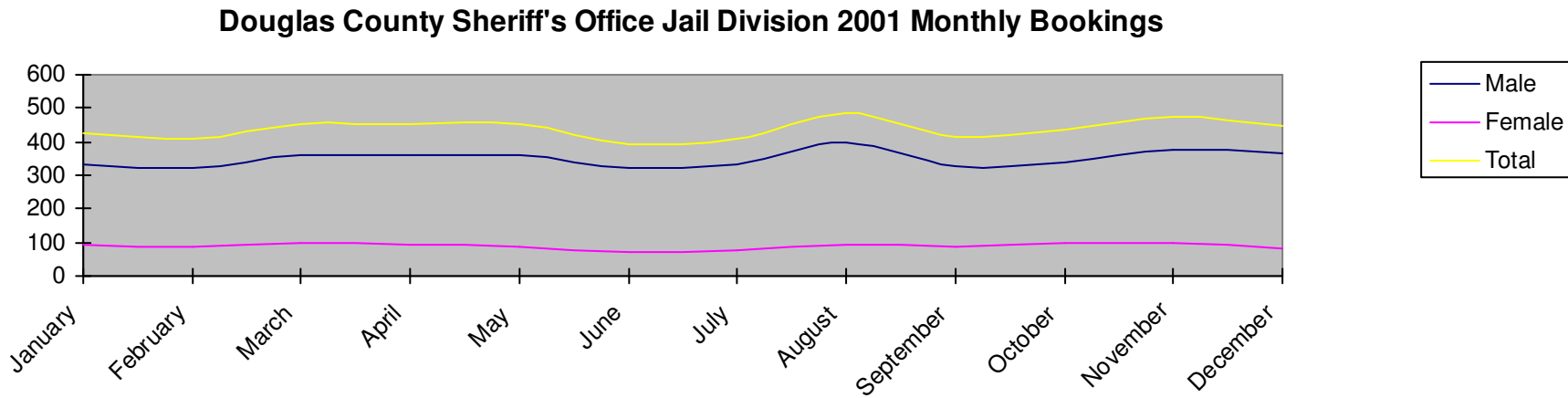
See supporting charts-

*2001 Monthly Bookings*

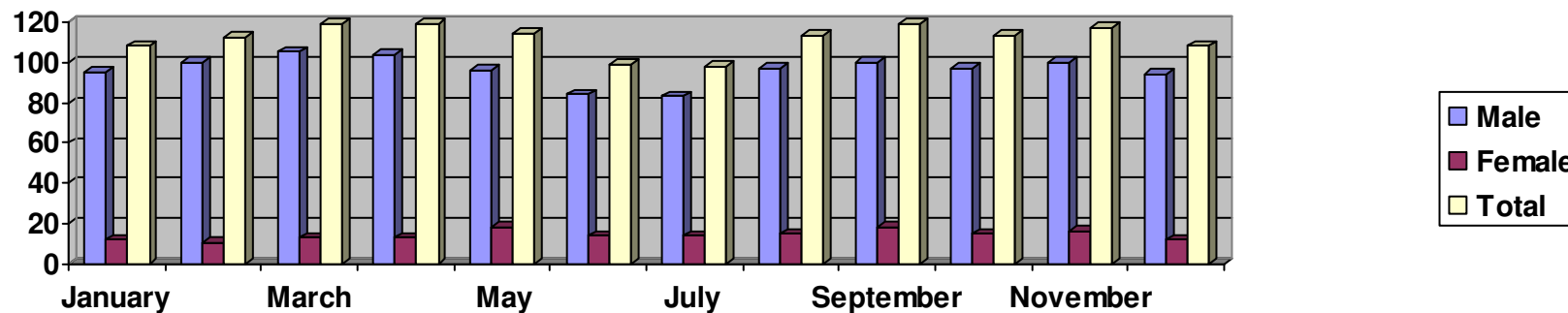
*2001 Average Daily Jail Population*

*2001 Ethnicity break down based on Average Daily Jail Population*

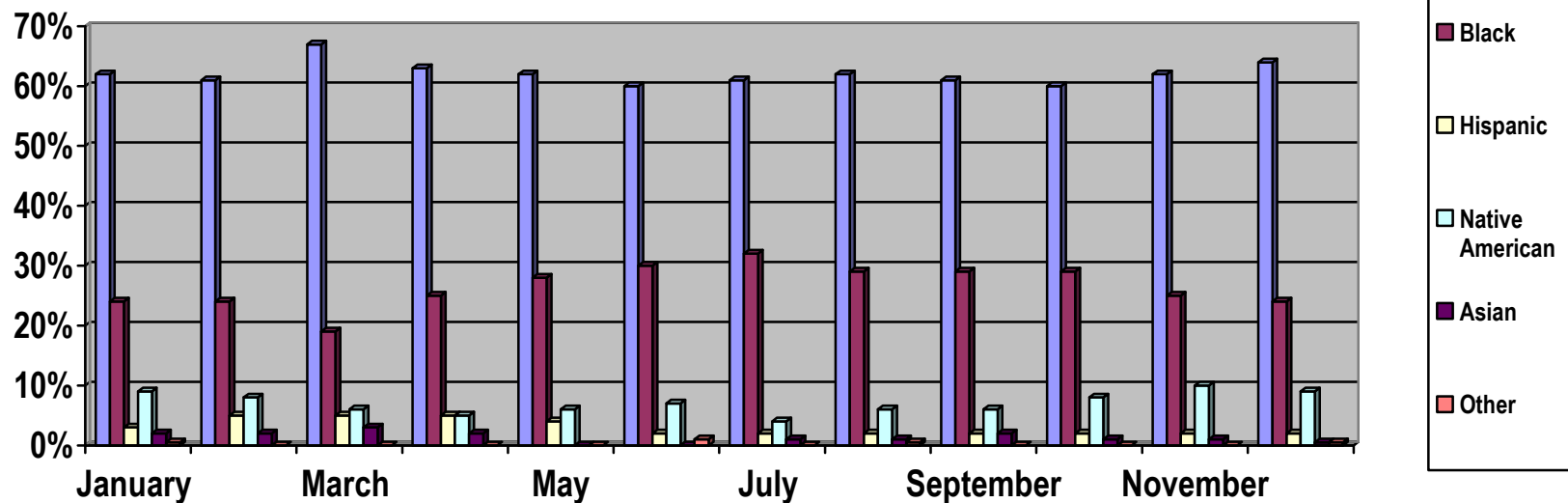
[Statistics taken from "Jalan" monthly reports - "Population Accounting Form-B. Demographics", "County Population Report", and "Booking per day Report provided by Kimberley Smoots]



Douglas County Sheriff's Office  
 Jail Division  
 2001 Average Daily Jail Population



Douglas County Sheriff's Office  
 Jail Division  
 2001 Ethnicity break down based on Average Daily Jail Population



**Kitchen Costs 2001** [Statistics taken from Linda Grant, CDM CFPP, Monthly Excel Kitchen and Food Costs Breakdown Report]

Total Costs of groceries, paper goods, cleaning supplies and small equipment- \$218,083.16

Total Meals served- 139,180

Total Costs divided by Total Meals= \$1.57 average cost for each meal

**Jail Medical Activity 2001**

Daily Clinic- 2667

Physicals- 369

Dr. Clinic- 240

Questions- 800

Lab- 121

**Jail Medical Activity, Out of Facility 2001**

X-Ray - 20

Dentist- 26

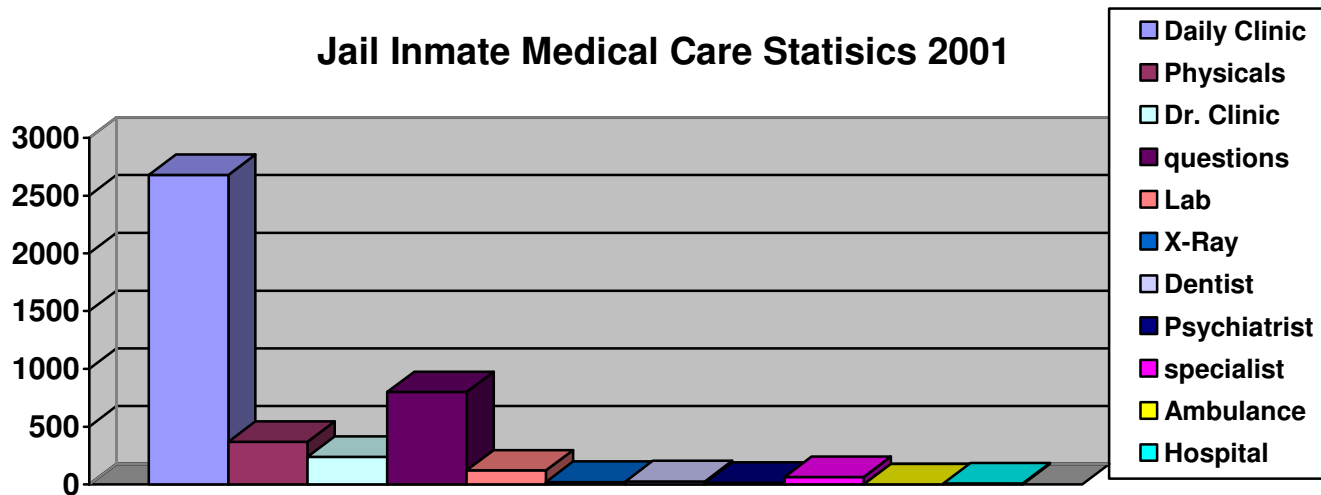
Psychiatrist- 14

Specialist- 64

Ambulance- 0

Hospital- 8

The Jail's medical staff resolved 97% of the inmate health related issues within the facility



[Statistics taken from VNA Monthly Health Care Services Log, provided by Lt. Wempe]